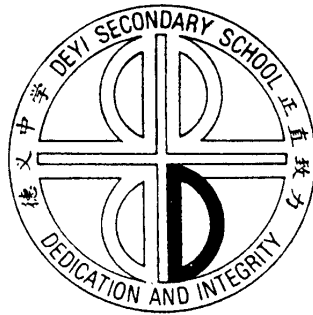


Normal (Academic)

DEYI SECONDARY SCHOOL

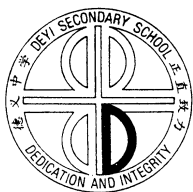


Secondary Two Streaming 2023

Information Booklet
for
Normal (Academic) Stream

Contents

Title	Page No.
Sec 3 Subject Combinations 2024	3
Synopsis of Subjects	4
FAQs	15
New Pathways for Sec 4NA Students	16
Useful Information about Post-Secondary Education	19



Sec 3 Subject Combinations 2024

Sec 3 Normal (Academic)

4 Compulsory Subjects	5th Subject Options	6th Subject Options
English Language	Humanities Social Studies and Geography (Elective) or History (Elective)	Art or Design & Technology or Nutrition & Food Science or Principles of Accounts
Mother Tongue Language		
Mathematics		
Science (Phy/Chem)		

Notes:

- The final subject combinations that will be offered for selection in Term 4 may differ from the options given in the above table.
- Depending on the demand, not all the above subject combinations may be offered. In general, an option will only be offered if more than 15 students opted and met the qualifications for it.

English Language (1190)

Synopsis of Subject

English Language is a **compulsory** subject. A pass in English Language is a requirement for post-secondary education.

Students should be able to:

- ◆ Listen, read and view critically and with accuracy, understanding and appreciation, a wide range of literary and informational/functional texts from print and non-print sources;
- ◆ Speak, write and represent in internationally acceptable English (Standard English) that is grammatical, fluent, mutually intelligible and appropriate for different purposes, audiences, contexts and cultures; and
- ◆ Understand and use internationally acceptable English (Standard English) grammar and vocabulary accurately and appropriately as well as understand how speakers/writers put words together and use language to communicate meaning and achieve impact.

The English Language curriculum aims to help students become independent lifelong learners, creative thinkers and problem solvers who can communicate effectively in English. It also equips them with the necessary skills to analyse, evaluate and respond appropriately as they acquire the essence of the English Language.

Examination Format

There will be **four** compulsory papers for the English Language examination:

Paper	Description	Duration	Marks	Weighting
1	Writing Section A: Editing Section B: Situational Writing Section C: Continuous Writing	1 hr 50 min	70 10 30 30	35%
2	Comprehension Section A: Responding to a Visual Text Section B: Comprehension (without summary) Section C: Comprehension (with summary)	1 hr 50 min	50 5 20 25	35%
3	Listening	About 45 min	30	10%
4	Oral Communication	about 20 min	30	20%

Mother Tongue Languages

CL: 1196 ML: 1197 TL: 1198

Synopsis of Subject

Mother Tongue Language is a compulsory subject. The course focuses on training basic text comprehension skills, listening skills and oral communication skills.

Students should be able to :

Read with understanding
Express their ideas fluently

The Mother Tongue Language curriculum aims to develop students to become competent users of their own mother tongue language. It also aim to nurture and promote students' interests and appreciation of their cultural heritage, while at the same time embracing cultural diversity.

Examination Format

There are **four** compulsory papers for the Mother Tongue Language examination:

Paper	Description	Duration	Marks	Weighting
1	Composition	2 hr	60	30%
2	Reading Comprehension	1 hr 30 min	60	30%
3	Oral	about 15 minutes	60	30%
	Listening Comprehension	about 30 minutes	20	10%

Mathematics Syllabus A (4045)

Synopsis of Subject

Mathematics is a compulsory subject. A pass in Mathematics is a requirement for post-secondary education.

The course aims to enable students to:

- acquire mathematical concepts and skills for continuous learning in mathematics and to support learning in other subjects;
- develop thinking, reasoning, communication, application and metacognitive skills through a mathematical approach to problem-solving;
- connect ideas within mathematics and between mathematics and other subjects through applications of mathematics; and
- build confidence and foster interest in mathematics.

Examination Format

Scientific calculators are allowed in both Paper 1 and Paper 2.

Paper	Description	Duration	Marks	Weighting
1	There will be about 23 short answer questions. Candidates are required to answer ALL questions.	2 hr	70	50%
2	There will be 2 sections: <ul style="list-style-type: none"> • Section A will contain 9 to 10 questions of varying lengths. Candidates are required to answer ALL questions. • Section B will contain 2 questions of which candidates will be required to answer only one. 	2 hr	70	50%

Science (Physics/Chemistry) (5105)

Synopsis of Subject

The subject aims to provide, through well-designed studies of experimental and practical science, a worthwhile educational experience for all students, to enable them to acquire sufficient understanding and knowledge to become confident citizens in a technological world, and be able to take or develop an informed interest in matters of scientific importance. It also aims to develop skills and attitudes that are relevant to the study and practice of science and the care for the environment.

Examination Format

Paper	Description	Duration	Marks	Weighting
1	Multiple Choice (Physics)	1 hr 15 min	20	20 %
2	Structured Questions (Physics)		30	30 %
3	Multiple Choice (Chemistry)	1 hr 15 min	20	20 %
4	Structured Questions (Chemistry)		30	30 %

Paper 1 & 3 Each Paper consists of 20 multiple choice questions on Physics or Chemistry.

Paper 2 & 4 Each Paper consists of two sections. Section A will carry 22 marks and will contain a number of compulsory structured questions. The last question will carry 8 marks. Section B will carry 8 marks and will contain two structured questions. Candidates must answer only one out of these two questions.

Humanities 2125, 2126
Social Studies (Compulsory Component)

Synopsis of Subject

Humanities, a compulsory subject, comprises two components: a compulsory Social Studies component and an elective component of Geography or History.

The new Social Studies Syllabus (SS2023) content is organised around three Issues and is anchored in a set of outcomes for knowledge, skills and values. The three Issues correspond to societal issues that have been shaping Singapore society and the world. The knowledge, skills and values acquired through a study of these Issues will enable students to enrich and deploy their competencies to respond to real world issues and in the process, strengthen their values as citizens. The following shows the three Issues, each organised around an Inquiry Focus which provides a frame for students to inquire and respond to each Issue and related issues

Issue 1: Exploring Citizenship and Governance

Inquiry Focus – Working for the good of society: Whose responsibility is it?

Issue 2: Living in a Diverse Society

Inquiry Focus – Living in a diverse society: Is harmony achievable?

Issue 3: Being Part of a Globalised World

Inquiry Focus – Being part of a globalised world: How can we respond to globalisation?

Examination Format

Paper	Description	Duration	Marks	Weighting
1	<p><u>Section A: (35 marks)</u> One source-based case study (compulsory)</p> <p><u>Section B: (15 marks)</u> Structured-Response Questions</p>	1 hr 45 min	50	50%

Humanities 2125
Geography Elective Component

Humanities, a compulsory subject, comprises two components: a compulsory Social Studies component and an elective component of Geography or History.

Synopsis of Subject

The Geography Elective highlights the interaction between the human and physical environment. The 2023 Geography syllabus helps students to understand how places and landscapes evolve, deliberate on consequences arising from our everyday decisions, and experience the mosaic of cultures and societies.

Content Overview:

This syllabus is divided into three clusters of three topics.

Cluster 1: Geography in Everyday Life	<ul style="list-style-type: none"> • Topic 1.1 – Thinking Geographically • Topic 1.2 – Sustainable Development • Topic 1.3 – Geographical Methods
Either Cluster 2: Climate	<ul style="list-style-type: none"> • Topic 2.1 – Weather and Climate • Topic 2.2 – Climate Change • Topic 2.3 – Climate Action
OR Cluster 3: Tectonics	<ul style="list-style-type: none"> • Topic 3.1 – Plate Tectonics • Topic 3.2 – Earthquakes and Volcanoes • Topic 3.3 – Disaster Risk Management

Examination Format

Description	Duration	Marks	Weighting
<p>Candidates answer Question 1 in Section A, and either Question 2 or 3 in Section B.</p> <p><u>Section A</u></p> <ul style="list-style-type: none"> • Question 1: Cluster 1 - Geography in Everyday Life (25m) <p><u>Section B</u></p> <p>Either</p> <ul style="list-style-type: none"> • Question 2: Cluster 2 - Climate (25m) <p>Or</p> <ul style="list-style-type: none"> • Question 3: Cluster 3 - Tectonics (25m) <p>Each structured question will consist of no more than 12 sub-parts. Candidates will be required to answer one 6-mark question testing AO3 in Question 2/ Question 3. This question will be marked using generic level descriptors. All other questions in this paper will be point-marked.</p>	1h 45 min	50	50%

<p>Humanities 2176/02 History Elective Component</p>

Humanities, a compulsory subject, comprises two components: a compulsory Social Studies component and an elective component of Geography or History.

Synopsis of Subject

The Making of the Contemporary World Order, 1910s-1991

To be effective citizens and participants in the 21st century, students need to understand how the present world system came into being, and the inter-connectedness of nation-states and peoples. The revised N(A)-Level History Elective syllabus seeks to examine the key forces and developments which have shaped international history in the 20th centuries. Through this revised syllabus, history students will acquire not just conceptual tools such as balance of power, hegemony, geopolitics and nationalism, but also the historical thinking skills.

Unit 1 starts with the narrative of Europe in crisis. It examines how, in the first half of the 20th century, European rivalries erupted into two world wars and the rise of authoritarianism that challenged the governments in Europe and led to the collapse of European hegemony.

Unit 2 analyses the shift in the global balance of power from Europe to the USA and USSR at the end of WWII. This re-alignment led to the emergence of a bi-polar world dominated by ideological, geopolitical and economic competition between the two superpowers.

Examination Format

Paper	Description	Duration	Marks	Weighting
3	<p><u>Section A: (30 marks)</u></p> <p>One source-based case study</p> <p><u>Section B: (20 marks)</u></p> <p>Structured-essay questions Candidates answer 2 out of 3 questions.</p>	1h 50min	50	50%

Principles of Accounts (7086)

Prerequisites

Preferably good grades in English and Mathematics.

Synopsis of Subject

Principles of Accounts (POA) syllabus is to develop in students the knowledge and skills to prepare, communicate and the use of both accounting information and non-accounting information related to the business to make decisions. This subject emphasizes on understanding and application of accounting knowledge to hone important lifelong skills.

Examination Format

Paper	Description	Duration	Marks	Weighting
1	<p><u>Structured Questions</u> Candidates answer 3 to 4 compulsory questions</p>	1 hr	40	40 %
2	<p><u>Answer 4 compulsory structured questions</u> One question requires the preparation of financial statements for a business for one financial year (20 marks) A scenario-based question (5 marks) will be part of 3 remaining questions.</p>	2 hr	60	60 %

Design & Technology (7055)

Prerequisites:

Pupils must possess the discipline and determination to engage in recurring problem-solving design activities.

Pupils must have the aptitude in 2D and 3D graphical techniques in design communication.

Synopsis of Subject

The subject places great emphasis on the discipline of Design Awareness and Appreciation of function, aesthetics and technology in design. It aims to promote problem solving design activities and to develop appropriate technical and graphical skills to realize solutions in design problems. As this subject is primarily coursework-based over 8 month's duration, it demands the virtues of self-discipline, inquisition and diligence of an independent learner to sustain and engage in creative exploratory design work.

Framework & Content

Section 1: Design

Design method, design conceptualisation and development skills

Section 2: Technological Areas

Mechanisms and electronics for designing and making controlled systems

Section 3: Materials and Practical Processes

Work with resistant materials and modeling materials using appropriate tools and equipment

Examination Format

Paper	Description	Duration	Marks	Weighting
1	<u>Written Paper</u> Answer all 3 compulsory questions based mainly on Design process, Design contents and Technological Areas. Question 1 on Design carries 24 marks. Question 2 and 3 on Technological Questions carries 18 marks each.	1 hr 30 min	60	40 %
2	<u>Coursework</u> The coursework comprises two interrelated components namely: Part A: Design Journal Part B: Presentation Boards (A2-sized, single sided, two pieces maximum)	20 weeks	60	60 %

Art (6125)

Prerequisites

Students must be keen in exploring creative use of material, techniques and technologies to generate ideas and create artworks.

Synopsis of Subject

The Art syllabus offers a balance Art curriculum through Studio Practice and the Study of Visual Arts. It emphasises the development of visual literacy through art making and the acquisition of visual critique skills. Students engage in activities of observing and recording, analysing and exploring, thinking and feeling as well as critical appraisal of artists and artworks. Students will hone their artistic skills and learn critical thinking and process skills that allow them to conceptualise and communicate ideas.

Art is a journey of discovery where students test new concepts, raise questions, work out problems and invent solutions. The aims of the syllabus are to:

- nurture an informed awareness and appreciation of visual art;
- enhance ability to identify and solve problems creatively in visual and tactile forms;
- develop competency in the use of art and design principles, materials and processes;
- foster self-confidence and a sense of achievement through the practice of visual art;
- cultivate an inquiring mind, a spirit of experimentation and a passion for visual art.

Examination Format

Paper	Description	Duration	Marks	Weighting
Paper 1 Coursework	One Coursework unit comprising the finished artwork and not more than five A2 sheets of preliminary / supporting studies that include the explorations of artists/artworks relevant to the chosen theme / media.	7 months	100	60 %
Paper 2 Drawing and Painting	Six themes will be issued and candidates are to make a response to one of the themes on paper of size A3 or A2. Preliminary / supporting studies of three to five A3 sheets of paper must be submitted.	3 hr	100	40 %

Nutrition and Food Science (6073)

Prerequisites

Students must show interest in planning and conducting food science experiments and have the diligence and determination to see through the coursework.

Synopsis of Subject

Nutrition and Food Science aims to develop students to:

- apply concepts in nutrition and health, food literacy and principles of food science.
- advocate sustainable food consumption by planning and making informed food choices.
- apply principles of culinary science creatively in food preparation and cooking.

Examination Format

Paper	Description	Duration	Marks	Weighting
1	<p><u>Written paper</u></p> <p>This paper will test the candidates' knowledge of theory and practice in response to the assessment objectives.</p> <p>Section A: Multiple Choice Question (16 marks) Section B: Data-Response/Short Answer (40 marks) Section C: Open-ended Questions (24 marks)</p>	1 hr 30 min	80	40%
2	<p><u>Coursework</u></p> <p>Candidates will be required to submit a 20-page coursework based on a task question which will be released at the beginning of the year. The coursework must be completed by July.</p> <p>Student are required to perform research linked to the task question, followed by plan, execute and evaluate dishes that are appropriate for the task question, with detailed justification and relevant food science knowledge.</p> <p>The coursework will also require candidates to plan and execute a food science experiment related to the task question, analyze its results using food science knowledge and apply these results back to the coursework task.</p>	25 hours	60	60%

FREQUENTLY ASKED QUESTIONS (FAQs)

Q1 What is the main criterion for streaming?

Ans Streaming is based on merit. The main criterion for streaming is academic results.

Q2 If I am unsuccessful in first choice subject combination, how does it affect my chances of getting the second choice?

Ans It does NOT affect your chances of getting into your second choice. Streaming is based on merit; the best students get streamed into their preferred choice first.

Q3 Must I be a SBB student in order to take English, Math or Science at "O" Level?

Ans Both SBB and non-SBB students may apply to take English, Math or Science at "O" Level.

Q4 What are the criteria for promotion from Sec 4NA to Sec 5NA?

Ans Students will need to obtain a pass in EL and Mathematics. The combined aggregate for EL-Math-Best 3 must be 19 or below.

Q5 Can I use CCA points to gain admission to a JC?

Ans Only students who are *eligible* for JC admission, ie $L1R5 \leq 20$ points, may use CCA bonus points. Students with an 'A' grade in CCA enjoy 2 bonus points, while those with a 'B' or 'C' grade enjoy 1 bonus point.

Q6 Can I use CCA points to gain admission to Millennia Institute (3-year Pre-U Centre)?

Ans To be eligible for admission, students must obtain not obtain more than 20 points in their L1R4. CCA may be used as one of the subjects for the calculation of L1R4.

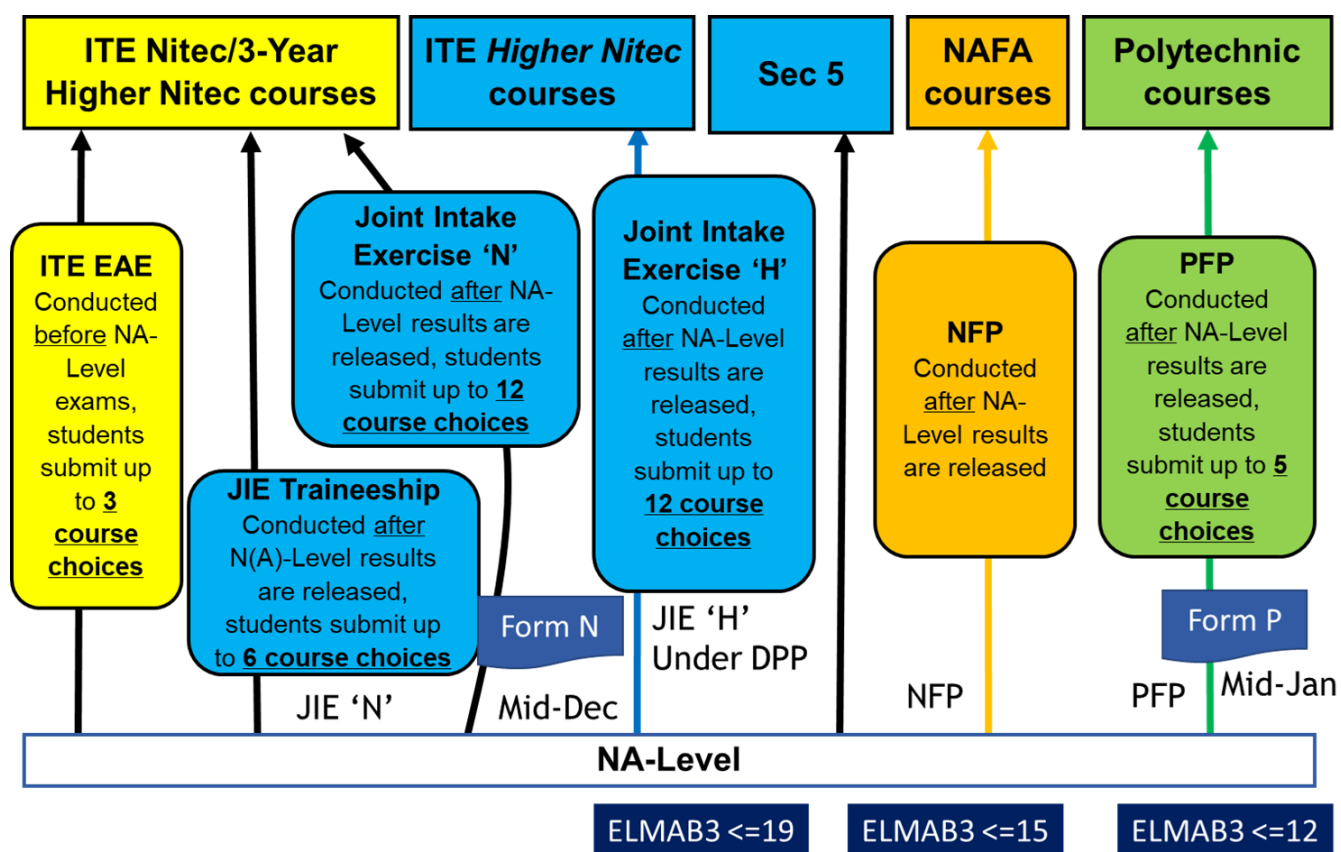
Q7 I am interested in studying a life science course in the Polytechnic? Is Biology compulsory?

Ans Any Science subject will do.

Q8 I am interested in studying an Engineering Course in the University. Is Physics compulsory?

Ans Physics is important in all engineering programs.

NEW PATHWAYS FOR SEC 4NA STUDENTS



NEW PATHWAY: POLYTECHNIC FOUNDATION COURSE (PFP)

Introduction

Caters to top 15% of Sec 4N(A) students
More than 70% of Poly Diploma courses will be offered

Eligibility

ELMAB3 ≤ 12 (excluding CCA points) and
EL ≤ 2 or 3 (depending on course)
MA ≤ 3
Relevant subject ≤ 3
B2 subjects ≤ 4 (NEW)

Progression to Polytechnics

Students who pass **all** modules in Foundation Programme (FP) and hence successfully completed FP will be admitted into first year of pre-selected polytechnic courses

NEW PATHWAY: DIRECT ENTRY SCHEME TO POLYTECHNIC (DPP)

Introduction

DPP to Poly builds on ITE Direct Entry Scheme (DES) introduced in 2008

Caters to top 10th percentile to 30th percentile of 4N(A)

Doubling the number of places to 1000 students who meet the qualifying GPA in Higher Nitec programme will be assured of **either a first year or second year** place in related Polytechnic Diploma course

Eligibility Criteria

ELMAB3 \leq 19 (excluding CCA pts) and

EL \leq 3 (depending on course)

MA \leq 4

B3 \leq 5

Progression to Polytechnics

To be assured of place in Poly Diploma course related to Higher Nitec DES programme, the following Grade Point Average (GPA) criteria must be met:

Applied Sciences, Engineering or Info-communications technology Higher Nitec DES prog

ITE raw GPA of 2.5 pts (excluding CCA bonus pts) – 1st year place

ITE raw GPA of 3.5 pts (excluding CCA bonus pts) – 2nd year place

Business & Services Higher Nitec DES prog

ITE raw GPA of 3.0 pts (excluding CCA bonus pts) – 1st year place

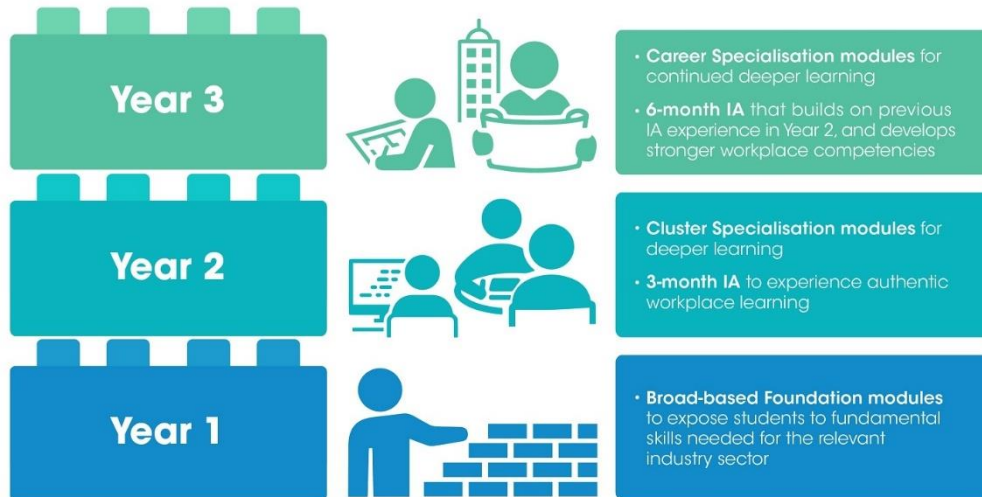
CCA bonus pts used for computing the ITE net GPA for selection & posting to Poly Diploma Course



Ministry of Education
SINGAPORE

3-YEAR PATHWAY LEADING TO **HIGHER NITEC**

*Streamlined curriculum and integrated Industry Attachments (IA)
for deeper work-ready skills and future upgrading*



ITE will adopt a phased implementation approach from AY2022 starting with eight courses: Accounting, Business Information Systems, Cyber & Network Security, Electronics Engineering, IT Applications Development, IT Systems & Networks, Security System Integration and Sport Management.

For more information, visit www.go.gov.sg/ite-curricular-structure

USEFUL INFORMATION ABOUT POST-SECONDARY EDUCATION
(extracted from Joint Admission Exercise (JAE) Booklet)

S/No	Type of Bonus Points	No. of Bonus Points Available	Maximum Bonus Points Allowable	
1	For students seeking admission to JC/Poly/ITE and with the following CCA grades: a. Grades of A1 – A2 b. Grades of B3 – C6	2 points 1 point	Limited to a maximum of <u>4 Bonus Points</u> only for these 4 sections.	Limited to a maximum of <u>6 Bonus Points</u> only.
2	For students seeking admission to JC/MI courses and with grades of A1 to C6 in both their first languages (i.e. English and a Higher Mother Tongue). This is provided that these choices come before any Poly/ITE choices.	2 points		
3	For students seeking admission to JC/MI courses and with grades of A1 to C6 in Malay/Chinese (Special Programme) (MSP/CSP) or Bahasa Indonesia (BI) as their third language. This is provided that these choices come before any Poly/ITE choices.	2 points		
4	For students from feeder schools if they choose their affiliated Junior College course(s) as their: a. 1 st choice, <u>or</u> b. 1 st and 2 nd choices.	2 points		
5	For students who have applied for the CLEP or MLEP and have been selected for the programme.	2 points	2 Bonus Points	

COMPUTATION OF AGGREGATES (ELR2B2) FOR POLYTECHNIC COURSES

Aggregate Type		ELR2B2 : For Polytechnic Courses			
		ELR2B2 -A	ELR2B2-B	ELR2B2-C	ELR2B2-D
EL		English			
R2	1st Group of Relevant Subjects	Art/Art & Design Business Studies Combined Humanities Commerce Commercial Studies Economics Geography Higher Art Higher Music History Humanities (Social Studies, Literature in English) Humanities (Social Studies, Literature in Chinese) Humanities (Social Studies, Literature in Malay) Humanities (Social Studies, Literature in Tamil) Humanities (Social Studies, History) Humanities (Social Studies, Geography) Intro to Enterprise Development Literature in English Literature in Chinese Literature in Malay Literature in Tamil Media Studies (English) Media Studies (Chinese) Music		Elementary Mathematics Additional Mathematics	
	2nd Group of Relevant Subjects	Additional Mathematics Art/Art & Design Business Studies Chinese Combined Humanities Commerce Commercial Studies Creative 3D Animation Design & Technology Design Studies Economics Elementary Mathematics Food & Nutrition Geography Higher Art Higher Chinese Higher Malay Higher Music Higher Tamil History Humanities (Social Studies, Literature in English) Humanities (Social Studies, Literature in Chinese) Humanities (Social Studies, Literature in Malay) Humanities (Social Studies, Literature in Tamil) Humanities (Social Studies, History) Humanities (Social Studies, Geography) Intro to Enterprise Development Literature in English Literature in Chinese Literature in Malay Literature in Tamil Malay Media Studies (English) Media Studies (Chinese) Music Principles of Accounts Tamil	Art/Art & Design Business Studies Combined Humanities Commerce Commercial Studies Economics Geography Higher Art Higher Music History Humanities (Social Studies, Literature in English) Humanities (Social Studies, Literature in Chinese) Humanities (Social Studies, Literature in Malay) Humanities (Social Studies, Literature in Tamil) Humanities (Social Studies, History) Humanities (Social Studies, Geography) Intro to Enterprise Development Literature in English Literature in Chinese Literature in Malay Literature in Tamil Media Studies (English) Media Studies (Chinese) Music Principles of Accounts	Add ^a Combined Science Additional Science Biology Biotechnology Chemistry Combined Science Computing/Computer Studies Creative 3D Animation Design & Technology Food & Nutrition Electronics/Fundamentals of Electronics General Science Human & Social Biology Integrated Science Physics/Engineering Science Science (Chem, Bio) Science (Phy, Bio) Science (Phy, Chem)/Physical Science Science (Phy, Chem, Bio)	Add ^a Combined Science Additional Science Art/Art & Design Biology Biotechnology Chemistry Combined Science Computing/Computer Studies Creative 3D Animation Design & Technology Design Studies Food & Nutrition Electronics/Fundamentals of Electronics General Science Higher Art Human & Social Biology Integrated Science Media Studies (English) Media Studies (Chinese) Physics/Engineering Science Science (Chem, Bio) Science (Phy, Bio) Science (Phy, Chem)/Physical Science Science (Phy, Chem, Bio)
B2		Best 2 other subjects			

SINGAPORE POLYTECHNIC 2023 JAE ELR2B2 RANGE

Course	2023 Planned Intake	Range of Net 2023 JAE ELR2B2
APPLIED SCIENCES		
Applied Chemistry (S64)	75	4 to 9
Biomedical Science (S98)	75	3 to 7
Chemical Engineering (S70)	120	7 to 14
Common Science Programme (S28)	105	3 to 10
Food Science & Technology (S47)	65	4 to 11
Perfumery & Cosmetic Science (S38)	35	6 to 11
BUILT ENVIRONMENT		
Architecture (S66)	100	3 to 16
Civil Engineering (S68)	120	8 to 26
Facilities Management (S95)	75	13 to 22
Integrated Events & Project Management (S50)	100	5 to 17
Landscape Architecture (S94)	40	11 to 17
BUSINESS MANAGEMENT		
Accountancy (S75)	100	4 to 12
Banking & Finance (S76)	80	3 to 11
Business Administration (S71)	120	6 to 12
Common Business Programme (S31)	205	5 to 13
Human Resource Management with Psychology (S48)	100	4 to 12
ENGINEERING		
Aeronautical Engineering (S88)	168	4 to 16
Aerospace Electronics (S90)	84	5 to 14
Common Engineering Programme (S40)	408	4 to 19
Computer Engineering (S53)	201	3 to 12
Electrical & Electronic Engineering (S99)	205	5 to 17
Engineering with Business (S42)	56	6 to 11
Mechanical Engineering (S91)	168	6 to 19
Mechatronics & Robotics (S73)	70	5 to 15
HEALTH SCIENCES		
Optometry (S67)	60	6 to 14
INFORMATION & DIGITAL TECHNOLOGIES		
Applied AI & Analytics (S30)	85	4 to 10
Common ICT Programme (S32)	170	3 to 14
Infocomm Security Management (S54)	125	5 to 12
Information Technology (S69)	175	4 to 15
MARITIME STUDIES		
Marine Engineering (S63)	115	7 to 26
Maritime Business (S74)	120	10 to 18
Nautical Studies (DNS)	40	Offered under DAE
MEDIA AND DESIGN		
Interior Design (S89)	60	8 to 16
Media, Arts & Design (S29)	415	3 to 13

(Source: <https://www.sp.edu.sg/sp/admissions/admissions-exercises/admission-criteria/course-intake-and-jae-elr2b2>)